

Atlas Profilax

Body, Mind, Spirit CD – Dr. Robert March, BS, ND 37 Year Practitioner

[Tell Me About Atlas Profilax](#) [For Preparatory & Follow-up Work for Atlas Profilax](#)

[Atlas Profilax Movie](#) [Atlas Profilax Website](#) [Testimonials](#) [Questions & Answers](#) [Interview](#)

Fellow Oneness Blessing giver Grant Woolven describes his first encounter with Atlas Profilax:

While I was in India in March 2005 attending the 21 day Oneness Process, I met and became friends with Christian Opitz, a Chi Gung practitioner, Herbalist, Nutritionist, Radiant Health Teacher and Neuroscientist from Germany. Having practised Yoga for 30 years, Chi Gung for 20 years, and researched Human Movement and Body Mechanics, I was amazed at how Christian moved; he seemed to gracefully spring and glide as he walked. I have practised Orthobionomy and Massage for 25 years and when I palpated his neck I was amazed; it felt strong yet soft like that of a baby. He told me it was due to a treatment he had called Atlas Profilax. Christian Opitz:

“After 15 years of experience with various forms of bodywork I received a treatment in the Atlas Profilax method. I have never experienced such profound, lasting changes from such a small investment of time; just one session and a follow up massage the next day. My neck mobility increased instantly and tension was released from my whole body. It was as if my body recognised something it had always known, yet could not experience. Walking and moving became more effortless and my practice of Chi Gung has clearly improved. What is most impressive to me is that these effects are permanent, do not require more sessions and span the whole spectrum from the structure of the skeleton and muscles to the more subtle energy channels. Meanwhile, many of my friends have also received this treatment and they all have had wonderful results.”

History of Atlas Profilax - After having serious health problems that resulted in a disability, Rene Schumperli refused to accept a lifetime of treatments, medication and surgery. Through intensive research he made a revolutionary discovery. In 1993 he observed, **for the first time** in the world, that the atlas is luxated in nearly every human being, with only rare exceptions. This fact had previously passed entirely unnoticed. As a result of this the spinal cord and some cranial nerves become permanently compressed. Permanent pressure is also placed on the vertebral and carotid arteries and associated blood and lymph vessels.

The luxated atlas is one of **the main causes** of dysfunction in the body and psyche resulting in pain, disability, infirmity and degeneration. Either the atlas is in its correct position or it is luxated. For anatomical and mechanical reasons, that atlas cannot sublunate (micro-displace).

By July 1996 Rene was the first person in the world to definitively reposition a luxated atlas, accurately and safely, in a single session. By February 2003 he had repositioned the atlas of **20,000 people**. This is achieved by a specialised type of massage, which permanently releases spasm in the short muscles of the neck. For anatomical and mechanical reasons, once the atlas has been correctly repositioned, **it cannot move out of place again!**

The atlas not only carries the skull, it guides the rest of the spine and the entire skeleton in posture and balance as the body moves through space. The Atlas Profilax method **assists the body to heal and revitalise itself** and is safe for infants and children. The grey matter of the brain is able to operate free of restrictions. Regeneration will occur at a different speed for each individual. During this time a ‘healing reversal’ process is catalysed by the body itself. This can take the form of muscular pain, tingling, fatigue and other symptoms, as the nerves reawaken and the bodily intelligence catalyses structural reform.



Over 20 years ago Cervical Spinal Fusion was performed on C 5, 7 and 8. The remaining discs have been degenerating since then. During the last few years I have had headaches and pressure under the skull. Several times the pain became so severe that I was hospitalised and received injections under the skull (at a cost of \$3000). This treatment provided relief for about nine months then it would be repeated.



I have to admit I was reluctant to have the Atlas Profilax correction. After this treatment I am a different and much happier person. I wake up each morning without a headache. There is so much less pressure under the skull that I can carry out a conversation without pain. After having numerous operations it may not be possible to remain pain free. If I continue as I am or improve even more I am very happy. My body feels free.

Dominic T.

I now feel comfortable sleeping on my back with a flat pillow which I haven't been able to do for 30 years. I feel lighter and unburdened. I have more flexibility in my neck. It really feels like a weight has been lifted off my shoulders.

Susanna B.

My husband has been suffering with protrusion of the spinal discs. Since the Atlas correction he is feeling much better.

Anette

A friend suffered from migraines for over 20 years. After the Atlas correction they disappeared. I decided to have the correction as well. I now have a lot less tension, more energy and more freedom of movement in my neck. My posture has straightened and I walk with my spine erect. I have become 2 cm taller. Another friend who suffered with migraines had the Atlas correction. After the treatment they decreased and now, after three months, they have gone.

Gerolamo

Straight after the Atlas correction I experienced much greater flexibility in my neck. The fear of injuring my neck, which I had for a long time after straining my neck on several occasions, has completely gone. The next day during my Yoga Chi Gung practice I experienced the greatest change; my legs were equal length. For my whole life one leg was always shorter. Now my posture has completely changed for the better and my spine feels freer, more flexible and lighter. For the last four years I also suffered tension on one side of my face and pain, at times incapacitating, in one of my teeth, which was a support for a bridge. This condition is now completely gone. I feel very, very grateful to have experienced these profound changes for the better.

Barbara L.

Straight after the Atlas correction I was lifted into an elevated state of consciousness, as if some energetic blockage had been released from my neck. After resting for 15 minutes I noticed that my whole spine and back muscles felt completely new, as if they had been returned to their original design. Now my spine feels more energetic than physical, lighter, freer and longer. My head feels like it is floating on my neck, there is a cushioned feeling when I stand and walk and I experience greater energy flow in Yoga Chi Gung practice. I feel very grateful for having had this treatment.

Grant W.

How amazing – over the last seven months the shape of my face has changed. At first the muscles either side of the jaw relaxed. After four months the bones of my skull shifted; slight bruising appeared on my forehead, new ridges formed across the top of my eyebrows. The overall symmetry of my face has improved; a lazy left eye now as active as the right one and a sinus and nostril bias slowly resolving. I have practiced the Alexander Technique and the Feldenkrais method for 15 years, which serve me well in observing the benefits of the atlas correction. As the months pass my neck is becoming a textbook Alexander neck, fuller, softer, with a connection between my head and body like a wide river instead of a narrow creek. I feel humbled and grateful for having had this groundbreaking procedure. For me it has been revolutionary.

Nick P.

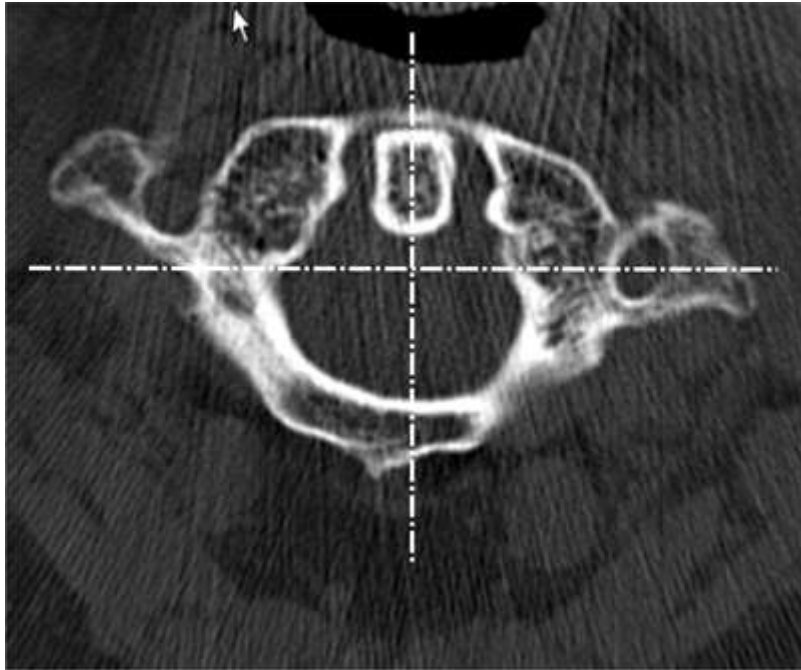
1. What is the proof that the atlas is out of alignment in the majority of human beings?

1. Firstly the Atlas is not in its anatomically and physiologically correct position in the majority of human beings; rather the Atlas is dislocated (luxated) in all human beings and every animal with a vertebral column. Secondly there is no finite proof, except that of the more than 300,000 humans that were tested by palpation, their Atlas was luxated to the left and tilted. Thirdly within the scientific method nothing can ever be proven definitively. A premise can only be supported or not by the presenting evidence.

2. Since we are talking about articulations is there X-ray proof of this dislocation?

2. Yes, an X-ray (first image) will show the luxation and tilt and a Computerized Axial Tomography scan (second image) will show the luxation, but the Atlas and its position is not clearly displayed on commonly ordered X-ray views. Even on specially ordered X-rays to display the Atlas is it difficult to determine because of the occiput and the luxation and tilt of the Atlas. The red arrows show on the X-ray show the luxation and the tilt of the Atlas.





3. Is there then any proof that with the adjustment this articulation between atlas and occiput is set right... permanently?

3. Most of those over 300,000 humans were tested by palpation after their Atlas was correctly installed and their Atlas was in its anatomical, physiologically correct position. The fact that it has remained in this position is due to the correction of the luxation. Chiropractors and other manipulative modalities correctly identify that there is an issue with the Atlas' position and recognize its importance in well-being. However the general perspective in those arenas is that the aberrant position of the Atlas is a "subluxated" one and therefore no "correction" that they can offer by manipulative means can be seen to be permanent. The Atlas Profilax discovery and one of its major tenets is that the aberrant position is actually a total luxation and by addressing the supportive structures that maintain this position a permanent correction is able to be implemented.

4. Is the proof merely subjective that the corrected individual reports feeling better?

4. No, some people do not feel any change in their physical, emotional or spiritual state; others do feel marked changes on any or all of these levels. Some people may experience an initial exacerbation of symptoms or revisit a previously experienced illness or injury. These retracings are an indication, but do not masquerade as proof that optimal communication between the brain and the body through the nervous system is able to occur due to the fact that the inner part of the Atlas is no longer impinging on the nerves than run through it. Leg length discrepancy is often used by health care professionals to indicate the position and integrity of the pelvis. The Atlas Profilax understanding is that the position of the pelvis and therefore leg length of the left and right leg are governed by the position of the Atlas. Measurement of leg length discrepancy before and after installation of the Atlas is used as an objective indication of the success of the installation. Another indication of the success of the installation of the Atlas is that the person is able to turn their head from left to right while keeping their body and shoulders stationary, without the head being tilted from the horizontal plane.

If you are open to more esoteric myths and mysteries & seek a possible reason why nearly 100% of humanity may have a luxated atlas, please [CLICK HERE](#).